

20 AUST INF BDE OPERATION ORDER 1

Copy 34

19 May 45

Ref Maps 1/4 miles to 1 inch LABUAN
 1/4 miles to 1 inch MIRI
 1 : 50,000 BRUNEI BAY Series
 1 : 25,000 BRUNEI BAY Series

INFORMATION1. Topography

AGS S FA Terrain Handbook 59, Terrain Studies 89 and 90.
(NOT on general issue)

2. Beaches

Locations and designations see Appendix A.

3. Enemy

See 1 Aust Corps Intelligence Review 3 OBOE SIX and 9 Aust Div Intelligence Review 1 OBOE SIX.

4. Own Troops

- (a) 9 Aust Div less 26 Aust Inf Bde Gp is to capture and hold the area LABUAN ISLAND - MUARA ISLAND - BRUNEI PENINSULA - BROOKETON with a view to subsequent capture of area BRUNEI BAY - SERIA - LUTONG - MIRI to permit the establishment of an advanced fleet base in BRUNEI BAY and to protect oil and rubber resources in these areas.
- (b) 26 Aust Inf Bde Gp is to capture LABUAN ISLAND, destroy enemy forces on the island and prepare for further operations in area BRUNEI BAY - BEAUFORT.
- (c) At the same time, 20 Aust Inf Bde Gp is to land and capture area BRUNEI BLUFF - BROOKETON - MUARA ISLAND.

5. Order of Battle Groupings

See Appendix B.

6. Command

During the approach to the objective area, Commander Naval Attack Unit is in command of the brigade operation until the force is ashore. Command of 20 Aust Inf Bde Gp ashore then passes to Commander 20 Aust Inf Bde.

7. Naval Support

Allied Naval Forces are:

- (a) To transport and escort the assault convoy to the objective area.
- (b) To bombard targets before Z Day.
- (c) To provide fire support for assault landings on Z Day.

8. Shipping and Craft

- (a) Shipping available for transport of assault force of 20 Aust Inf Bde Cp is:

	<u>Date of Release</u>
1 LSI) on completion of unloading
5 AFD) Z Day
8 LSM) on completion designated
1 LCI) coastwise operations
5 LST	by Z plus 23 day in objective area

- (b) Part of 1 LSD is to be available for initial operation.

(c) Availability of Craft

(i) Z Day

7 LCM	(2 RAF ex HTAS KANIMBLA, 1 593 EB and SR ex HTAS KANIMBLA, 4 593 EB and SR ex LSD)
4 barges	ex LST

(ii) Remaining after Z Day

4 barges	(proceed to LABUAN 1800Z Z plus 1)
5 LCM	(593 EB and SR)
1 LCT	(probably NOT before Z plus 2)

- (iii) Other shipping remaining in the objective area and available to 9 Aust Div for coastwise operations comprises:

4 LST	(2 surgically equipped 2 6-davit type)
4 LSM	
6 LCI	
6 LCT	

- (iv) Two boat companies 593 EB and S Regt are to be available from Z plus 1 Day.

- (d) Boat harbour for 593 EB and S Regt in cove vicinity SW and YELLOW BEACH.

- (e) Allotment of LVT(4) see para 27.

9. Air Support

RAAF Command, with in support 13 US Air Force, is supporting the operation by:

- Preliminary air attacks before Z Day.
- Pre-arranged air bombardment prior to the assault.
- Direct air support as requested after landing.
- Reconnaissance.
- Air evacuation facilities.

INTENTION

10. 20 Aust Inf Bde Gp will land and capture the area BRUNEI BLUFF - BROCKETON - MUARA ISLAND with a view to subsequent operations to gain control of BRUNEI PENINSULA from inclusive BT TABUR BINTANG 488518 to inclusive BRUNEI TOWN.

METHOD

11. Summary of Assault Landings

- (a) The operation is part of 9 Aust Div operation 0303 SIX under command GOC 9 Aust Div.
- (b) 20 Aust Inf Bde Gp will make simultaneous landings with 2/17 Aust Inf Bn Gp on GREEN BEACH and 2/15 Aust Inf Bn Gp on WHITE BEACH. First object of the landings is to secure MUARA ISLAND and BROCKETON to enable the remainder of the Gp with its stores to be landed on RED BEACH and YELLOW BEACH.
- (c) 2/13 Aust Inf Bn Gp in brigade reserve, initially afloat, to land on call.
- (d) For general lines of Brigade objectives see Appendix A.

12. 2/17 Aust Inf Bn Gp

Tasks

- (a) Capture GREEN BEACH
- (b) Capture high ground vicinity BT COME - hill vicinity 610555 and exploit to BRUNEI BLUFF.
- (c) Exploit to BROCKETON with a view to capturing YELLOW BEACH.
- (d) If BROCKETON is strongly held by the enemy, 2/17 Aust Inf Bn Gp will hold ground gained while brigade reserve is employed for capture of YELLOW BEACH.

13. 2/15 Aust Inf Bn Gp

Tasks

- (a) Secure beachhead vicinity CAPE SAPO 690514 from inclusive WHITE BEACH to inclusive RED BEACH.
- (b) Capture the southern and western sides of MUARA ISLAND to LEDONG POINT 633542 to secure the southern channel to MUARA HARBOUR.
- (c) Destroy or capture all enemy remaining in MUARA ISLAND.
- (d) Be prepared:
 - (i) To provide a detachment to be despatched in landing craft up BRUNEI RIVER to vicinity square 5341 (see Appendix C).
 - (ii) For further operations on the mainland or in BRUNEI BAY.

14. 2/13 Aust Inf Bn Gp - Brigade Reserve

2/13 Aust Inf Bn Gp will be organised for an assault landing and prepared to land where ordered. Probable tasks (alternatives):

- (a) Land on GREEN BEACH or YELLOW BEACH with a view to operations in area BROOKETON - PISANG

OR

- (b) Land on RED BEACH with a view to mounting an assault from MUARA ISLAND on YELLOW BEACH if required.
- (c) Be prepared to provide a detachment to be despatched in landing craft up BRUNEI RIVER to vicinity square 5341 if 2/15 Aust Inf Bn Gp NOT ordered to provide this. See Appendix C.

15. Naval Bombardment

- (a) Landings are being supported by direct naval bombardment and fire of close support craft.
- (b) Allotment of ships and support craft see Appendix D Part 1.
- (c) Targets for naval bombardment Appendix D Part 2.
- (d) On completion of schedule fire, support is to be continued by call fire controlled by SFCs as shown in Appendix D Part 1. Schedule fire in Appendix D Part 3.
- (e) No interruptions to naval gunfire will occur on Z Day. All air strikes within area of naval gunfire are to be made from above 5000 feet.
- (f) Availability and allotment of ammunition Appendix D Part 4.

16. Requests for Night Firing and Indirect Support

Requests for night firing tasks or for indirect naval support early the following morning will be sent to HQ 20 Aust Inf Bde NOT later than 1730I daily.

17. Co-ordination of Call Fire

Detachment HQ B Tp 1 Aust Naval Bombardment Gp with HQ 20 Aust Inf Bde is responsible for co-ordinating fire of SFCs landing on GREEN and WHITE BEACHES and is to ensure that safety of own troops is NOT endangered.

18. Air

- (a) Pre-arranged air bombardment Z Day

See Appendix E Part 1.

- (b) Direct air support

- (i) Z to Z plus 3 inclusive. 13 US Air Force is providing 6 B25 Mitchell aircraft for direct air support continuously on station in area BRUNEI BLUFF - MUARA ISLAND from 0800I to 1600I daily, commencing Z Day and continuing to Z plus 3 inclusive.
- (ii) From including Z plus 4 until released. 6 B25 Mitchell aircraft are being held at base on ground alert to fulfil requests for direct support in area BRUNEI BLUFF - MUARA ISLAND as ordered from Command Post 1 TAF RAAF.

- (iii) 13 US Air Force is providing a combat air patrol of NOT less than 4 fighters over objective area from 0730I to 1730I daily from Z minus 3 until relieved approximately Z plus 6. From inclusive Z Day, aircraft being relieved on station are available for any direct air support mission prior to return to base.

(c) Air Support Control

For:

- (i) air support procedure
- (ii) control of air support ashore
- (iii) target bomb lines -

see Appendix E Part 2.

(d) Allotment of air support units

HQ 20 Aust Inf Bde	one Air Support Party
2/15 Aust Inf Bn	one ALF
2/17 Aust Inf Bn	one ALF

(e) Air Observation Posts (AOP)

- (i) 16 Air OP Flight RAAF (6 Auster aircraft) is to provide AOP and local reconnaissance sorties as requested, initially from LABUAN ISLAND.
- (ii) On completion of strips on PUARA ISLAND and at BROCKTON, two Austers are to be stationed in that area in support of 20 Aust Inf Bde Gp.
- (iii) Fifty percent of Auster sorties are allotted to 2/8 Aust Fd Regt which is to supply OPOs as required.
- (iv) Requests for sorties will be passed to HQ 20 Aust Inf Bde.
- (v) An officer of 83 Army Co-op Wing RAAF is to land on RED BEACH with 2/15 Aust Inf Bn Gp to report when strip is ready for Austers. Two OR are to land for re-fuelling aircraft.

(f) Army co-operation

- (i) HQ 83 Army Co-op Wing RAAF with under command

4 Tac R Son less flight
16 Air OP Flight less det
det 9 Local Air Supply Unit

is being landed on LABUAN ISLAND and is expected to be operational by Z plus 6.

- (ii) Requests for sorties will be made through HQ 20 Aust Inf Bde.

(g) Air Warning

See para 15.

19. Target Indication

- (a) (i) Naval and air targets are shown in Appendix D Part 2.
- (ii) Target serial numbers are common to Navy, Army and Air Force.
- (b) Area targets for air bombardment in 20 Aust Inf Bde Cp area are designated by letters M to Z. See Appendix D Part 2.

20. Armour

A Bcn 2/9 Aust Armad Regt less three troops and with under command one Flamethrower Tp 2/1 Aust Armad Bde Recce Bcn, is allotted as follows:

- (a) One troop under command 2/17 Aust Inf Bn to land GREEN BEACH on call, if seaward approaches permit.
- (b) Remainder in brigade reserve to land initially on RED BEACH.

21. Artillery

(a) Command

- (i) CC 2/8 Aust Fd Regt will command all artillery units in 20 Aust Inf Bde Cp.
- (ii) When HQ 2/8 Aust Fd Regt is established ashore all artillery units under command battalion groups for landing will revert to command 2/8 Aust Fd Regt, remaining in support of battalions.
- (iii) When HQ RAA 9 Aust Div is established ashore on LABUAN ISLAND, artillery units come under command CRA but remain in support 20 Aust Inf Bde.

(b) Field Artillery

- (i) One troop (75 mm) 58 Aust Fd Bty lands GREEN BEACH under command 2/17 Aust Inf Bn.
- (ii) 58 Aust Fd Bty less one troop lands YELLOW BEACH. On landing, 58 Aust Fd Bty will assume control of 75 mm troop and the whole battery comes under command 2/17 Aust Inf Bn until HQ 2/8 Aust Fd Regt is established.
- (iii) 15 Aust Fd Bty lands WHITE and RED BEACHES under command 2/15 Aust Inf Bn for landing and will support operations of 2/17 Aust Inf Bn Cp. Subject to requirements of 2/17 Aust Inf Bn Cp, it will be available to 2/15 Aust Inf Bn Cp. It will support 2/15 Aust Inf Bn in the event of a counter attack endangering security RED BEACH.
- (iv) 16 Aust Fd Bty, part of brigade reserve, on call to land where ordered, probably RED BEACH.
- (v) One battery may be required NOT before J plus 4 hours to move by craft to a position to be secured by BRUNEL RIVER Detachment.

(c) Light AA

9 Aust LAA Bty ~~less~~ two troops will:

- (i) Initially, protect beachheads at BROOKETON and MUARA ISLAND.
- (ii) After closing of RED BEACH, protect installations and gun areas vicinity YELLOW BEACH - BROOKETON.

Where possible, light AA guns will be included in dispositions for seaward defence of beaches.

(d) Survey

8 Aust Svy Bty less two troops, with under command detachment 5 Aust Svy Coy RA3, lands YELLOW BEACH and will begin survey in area secured by 20 Aust Inf Bde Gp.

22. Engineers

(a) Command

- (i) OC 2/3 Aust Fd Coy will command all engineer units in 20 Aust Inf Bde Gp.
- (ii) When HQ 2/3 Aust Fd Coy is established ashore, all engineer detachments under command battalion groups for landing will revert to command 2/3 Aust Fd Coy, remaining in support of the units to which they are attached.

(b) Tasks

- (i) Assist Detachment 1 Aust Beach Gp in clearing beaches and recovering drowned vehicles.
- (ii) Assist in development of BIA vicinity BROOKETON.
- (iii) Improve roads, tracks and bridges.
- (iv) Provide water supply.
- (v) Clear heavily mined areas.
- (vi) Construct a landing strip for Auster aircraft on MUARA ISLAND on 3 Day after RED BEACH secure, and another as soon as practicable, near BROOKETON.
- (vii) In conjunction with RAN Beach Commando C, mark channels and provide necessary stores for marking when these tasks are not carried out by Allied Naval Forces.
- (viii) Erect PW cage and civilian compounds.

23. Medium Machine Guns

(a) B Coy 2/2 Aust MG Bn is allotted as follows:

two platoons under command 2/17 Aust Inf Bn
one platoon under command 2/13 Aust Inf Bn

(b) Coy HQ will join HQ 20 Aust Inf Bde on landing.

24. Flamethrowers

(a) Initial Allotment

2/15 Aust Inf Bn	8
2/17 Aust Inf Bn	4

(b) For fuel see 20 Aust Inf Bde Adm Order 1 para 3(b).

(c) Arrangements for re-charging pressure tanks notified separately.

25. Beach Group

(a) Detachment 1 Aust Beach Gp under command Commander YELLOW BEACHHEAD (see para 25(b)) will be prepared:

(i) To assist in unloading stores and heavy equipment on RED BEACH.

(ii) As soon as YELLOW BEACH is cleared, to establish BHA vicinity BROCKETON.

(b) LCB Troops are being organised as beach working parties.

(c) Two 3 x 7 and two 3 x 12 NL pontoons ^{barges} are to be available for unloading ships. Allied Naval Forces operate these pontoons until assault shipping is withdrawn, after which RAE will take over pontoons.

(d) For details of beach organisation see 20 Aust Inf Bde Administrative Order 1.

26. Services Reconnaissance Department (SRD)

(a) One detachment with HQ 20 Aust Inf Bde.

(b) Tasks

(i) Provide communication with field parties.

(ii) Control movements and tasks of field parties.

27. Amphibious Tractors LVT(h)

(a) One coy 727 US Amphibious Tractor Bn is allotted to 2/15 Aust Inf Bn Gp for assault landing on WHITE BEACH.

(b) The coy comes under command 20 Aust Inf Bde when RED BEACH is secured.

(c) The company reverts to command 9 Aust Div by 08001 Z plus 1.

28. Distribution of Force to Ships by Units

See Appendix F. Relevant portions only distributed to minor units.

29. Landing Diagram

See Appendix G.

30. Landing Table

See Appendix H.

31. Z Day

Notified later.

32. Landing Hours

GREEN BEACH	H Hour	
WHITE BEACH	J Hour	
RED BEACH	T Hour	} if required.
YELLOW BEACH	M Hour	

Time notified later.

33. Timetable of Events

See Appendix I.

34. Passing of Information

See Appendix J.

35. Beach Defence

(a) Responsibilities

- (i) 2/17 Aust Inf Bn Gp will, on capture BRUNEI BLUFF, be responsible for covering beach SW of BRUNEI BLUFF.
- (ii) 2/15 Aust Inf Bn Gp will be responsible for beach defence and coast watching on MUARA ISLAND.
- (iii) When FMA at BROCKETON is established, local defence of area YELLOW BEACH - BROCKETON including TG PELOMPONG 6756 will be responsibility of Commander YELLOW BEACHHEAD.

(b) Commander YELLOW BEACHHEAD

Maj L SNELL 2/15 Aust Inf Bn, will be Commander YELLOW BEACHHEAD. Instructions covering his responsibilities are issued separately. Tasks include:

- (i) When necessary, assume operational control of all troops of Beach Group, LCB Groups and Services in area BROCKETON - YELLOW BEACH.
- (ii) Allot defensive positions to be manned on alarm.
- (iii) Co-ordinate defence with light AA dispositions.
- (iv) Provide for coast watching posts and signals.
- (v) Control all seaward lights and co-ordinate them with naval requirements.

36. Security of Bridges and Culverts

- (a) Units will patrol within own areas at first light in order to inspect bridges, culverts and defiles to discover and disarm newly laid charges and prevent demolitions.
- (b) Such patrols will be sent out before troops and vehicles begin to move.

37. Embarkation

- (a) Embarkation instructions issued separately. The strictest compliance with them by all units is required.
- (b) NO vehicles or stores of any kind may be put on board except those for which authority has been given.
- (c) Vehicles will NOT be loaded beyond proper capacity and the load in D/T tons will NOT exceed the rated loading for that type of vehicle.
- (d) Stores will NOT be loaded on guns other than normal gun stores.
- (e) All packages will be of such size and weight that they can be handled by two men, except approved bulky equipment which cannot be broken down into small packages.

ADMINISTRATION

38. See 20 Aust Inf Bde Administrative Order 1 of 19 May 45 issued separately.

INTERCOMMUNICATION

39. Location of HQ

20 Aust Inf Bde	Afloat Ashore	USS SPENCER Vicinity ABSS on landing beach then vicinity 611560
Alternative Bde HQ	Afloat	USS IN OYD. Members land with 2/13 Aust Inf Bn Gp and rejoin Main HQ.
2/13 Aust Inf Bn Gp	Afloat	USS LLOYD
2/15 Aust Inf Bn	Afloat Ashore	LST 751 Vicinity bunker 688514
2/17 Aust Inf Bn	Afloat Ashore	HMAS KANIMBLA Vicinity GREST BEACH
2/8 Aust Bd Regt	Afloat Ashore	USS SPENCER Vicinity HQ 20 Aust Inf Bde
2/3 Aust Bd Coy	Afloat Ashore	USS SPENCER To be notified.
Senior Medical Officer	Afloat Ashore	USS SPENCER Vicinity HQ 20 Aust Inf Bde

40. Signal Plan

Detailed signal plan issued separately as 20 Aust Inf Bde Signal Instruction 1.

41. Wireless Diagram

See Appendix F Part 1.

42. Line Communications Diagram

See Appendix K Part 2.

43. Line Maintenance

- (a) All lines will be laid well off left side of roads and tracks.
- (b) Lines will be poled or treed as they are laid.

44. Wireless Silence

- (a) Wireless silence on Z Day will be maintained by all army stations until one hour before H and J Hours.
- (b) On Z Day listening watch will be maintained from two hours before H and J Hours.
- (c) Emergency messages will be passed through naval channels prior to breaking of wireless silence.
- (d) After wireless silence is broken it will be re-imposed or broken again only by means of appropriate codewords.

45. Communications for Air Warning

- (a) When the force is ashore, air warning will normally be given by telephone. Appropriate action will be taken on receipt of following codewords:

FLASH BLUE	Enemy or unidentified planes approaching
FLASH RED	Enemy air attack imminent
FLASH WHITE	All clear.

- (b) Under such conditions the following control terms may also be relayed:

CONTROL GREEN	All guns will hold fire except in case of direct attack and then only automatics including light AA will be used.
CONTROL YELLOW	All guns engage hostile aircraft independently.

46. Frequencies

- (a) Issued by Signals.
- (b) Frequency will be changed only by appropriate code word issued by Signals.
- (c) Frequencies remain fixed until 0700I on Z plus 3 after which normal daily change begins.

47. Panel Signals - Ground to Air

- (a) Visual ground to air signalling by CGSP S Combined Panel System.

- (b) Meanings temporarily assigned to local assignment panel numbers of the local assignment section of the vocabulary portion of CCBP 8. See Appendix L.
- (c) Unit identification panel displays will consist of three digit (number) panels displayed vertically below the Flash Index. Such groups will be read from top to bottom below the indicator. In this case the numeral indicator Y will NOT be used.
- (d) Allotment of unit identification panel display numbers in Appendix L.

48. Identification and Recognition

Sea-Land, Air-Sea and Air-Ground recognition and identification will be in accordance with procedure contained in GHQ SOIs 29 to 32 inclusive. Relevant extracts will be issued from time to time.

49. Pyrotechnics

The following pyrotechnic signals will be used between ground troops and aircraft.

(a) By ground troops

Meaning

Aust 2 inch multi star Green	.Artillery fire or bombs falling within our lines.
---------------------------------	---

(b) By aircraft

2 star Red	Display front line panel. Air attack about to commence.
2 star Green	My mission has been completed.
Six white flares, parachute Mk 6	First wave 500 yards from beach.

50. Fluorescent Panels

- (a) Yellow fluorescent panels will be used by 20 Aust Inf Bde Gp to indicate positions of ~~FOREIGN~~ INFANTRY ONLY as follows:

- (i) When direct air support is about to be given.
- (ii) When friendly aircraft request indication of forward positions by alternate dips and climbs or by firing flares - see para 49 (b).
- (iii) When the communications of an isolated forward body of troops break down and air reconnaissance to locate them is expected.

- (b) Fluorescent panels will NOT be used to mark dropping grounds or HQ.

- (c) The panels will only be displayed YELLOW side uppermost.

- (d) Panels will be rolled up BEFORE troops resume their advance.

51. Code Signs and Code Names

- (a) Issued by Signals.
- (b) Code signs and code names will remain fixed until 0700I on Z plus 3 after which normal daily change will begin.

52. Code Words

- (a) Code words for phases of the operation in Appendix P.
- (b) Code words for places and features in Appendix I.
- (c) Code words in Appendix M will be used only within 9 Aust Div and will NOT be used in communications to Allied Naval and Air Forces.

53. Codes and Ciphers

- (a) Until 0700I Z plus 3, combined assault code CCBF 0130 Series DCG 25 will be used for local communications with Allied Forces, RAN and RAAF for all messages which require enciphering.
- (b) As from 0700I Z plus 3, TRENCODE will replace combined assault code CCBF 0130 for communication to battalion and equivalent HQ, Commando squadrons and field batteries.
- (c) As from 0700I Z plus 3, combined Field Code CCBF 0129/3 with CCBF 0121/01 will be used for communication with Allied Forces, RAN and RAAF.
- (d) RT Code No 2 will be used by AUST Army units for all RT conversations during the operations. Key words/key letters issued through Signals.
- (e) Current appointments code in Signal Training Pamphlet No 5 will be used.
- (f) Distribution of cipher keys and documents through Signals.

54. Passwords

Issued separately.

55. Signal Security

- (a) All messages transmitted by wireless will be encoded or enciphered where it is considered that the enemy can take action on them in time if they are sent in clear.
- (b) Existing civil and military communication systems in the objective area will NOT be used until approval is obtained from HQ 20 Aust Inf Bde.
- (c) Strict attention will be given to security in telephone conversations.

56. Time Zone

- (a) ITEX time will be used. Zone suffix I.
- (b) To determine time for this zone, 9 hours will be added to GMT (US - GCT) or 1 hour subtracted from AUST Eastern Time.

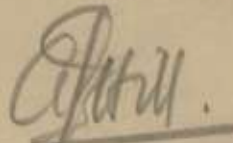
57. Synchronisation

- (a) Ship's time will be used while afloat.
- (b) After landing, time will be synchronised with time broadcasts from station WTO (US Army) BRISBANE or ABC or BBC time signals.

58. DRLS

20 Aust Inf Bde Sig Sec will begin DRLS by 1700I Z Day or as soon as practicable thereafter.

ACKNOWLEDGE


Maj
BM 20 Aust Inf Bde

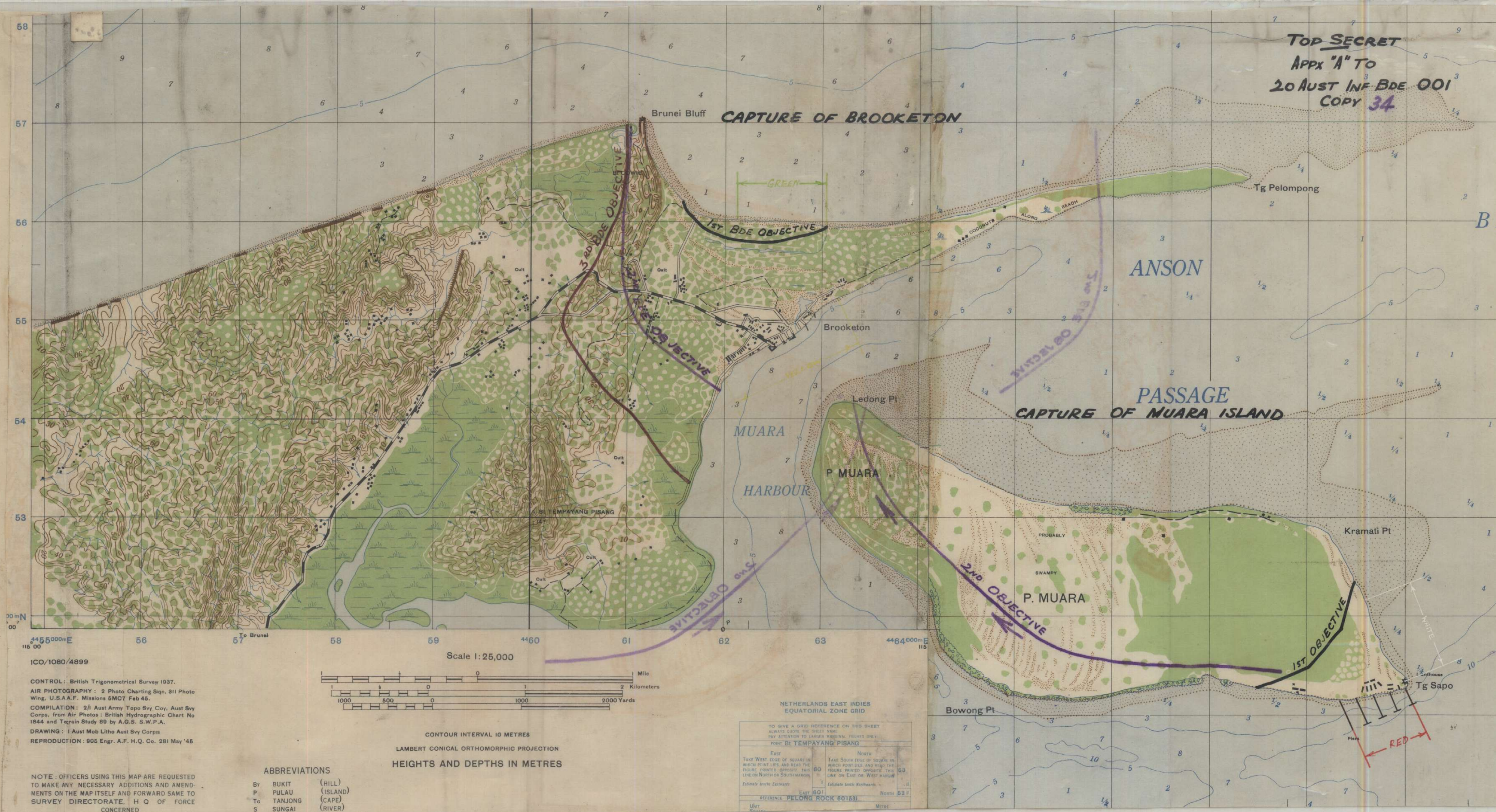
Signed at I

Issued by LO.

DISTRIBUTION

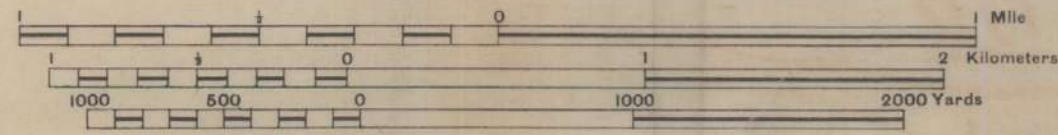
See next page.

TOP SECRET
APPX "A" TO
20 AUST INF BDE 001
COPY 34



ICO/1080/4899

CONTROL: British Trigonometrical Survey 1937.
AIR PHOTOGRAPHY: 2 Photo Charting Sqn, 311 Photo Wing, U.S.A.A.F. Missions 5MC7 Feb 46.
COMPILATION: 2/1 Aust Army Topo Svy Coy, Aust Svy Corps, from Air Photos: British Hydrographic Chart No 1844 and Terrain Study 89 by A.G.S. S.W.P.A.
DRAWING: 1 Aust Mob Litho Aust Svy Corps
REPRODUCTION: 905 Engr. A.F. H.Q. Co. 281 May '46



CONTOUR INTERVAL 10 METRES

LAMBERT CONICAL ORTHOMORPHIC PROJECTION

HEIGHTS AND DEPTHS IN METRES

NOTE: OFFICERS USING THIS MAP ARE REQUESTED TO MAKE ANY NECESSARY ADDITIONS AND AMENDMENTS ON THE MAP ITSELF AND FORWARD SAME TO SURVEY DIRECTORATE, H Q OF FORCE CONCERNED

ABBREVIATIONS

Bt BUKIT (HILL)
P PULAU (ISLAND)
Tg TANJONG (CAPE)
S SUNGAI (RIVER)

NETHERLANDS EAST INDIES EQUATORIAL ZONE GRID			
TO GIVE A GRID REFERENCE ON THIS SHEET ALWAYS QUOTE THE SHEET NAME PAY ATTENTION TO LARGE MARGINAL FIGURES ONLY POINT BI TEMPAYANG PISANG			
EAST		NORTH	
TAKE WEST EDGE OF SQUARE IN WHICH POINT LIES AND READ THE FIGURE PRINTED OPPOSITE THIS LINE ON NORTH OR SOUTH MARGIN		TAKE SOUTH EDGE OF SQUARE IN WHICH POINT LIES AND READ THE FIGURE PRINTED OPPOSITE THIS LINE ON EAST OR WEST MARGIN	
Estimate (to the Eastward)		Estimate (to the Northward)	
EAST 601		NORTH 631	
REFERENCE PELONG ROCK 601831		NORTH 631	
UNIT Meters		UNIT Meters	

TOP SECRET

OBOE SIX

Appx B to 20 Aust Inf
Bde 00 1

COMPOSITION BN GPS FOR LDG

Copy No 4....

PART 1 - 2/17 AUST INF BN GP

ARM'D

one tp A Sen 2/9 Aust Arm'd Regt

ARTY

58 Fd Bty, 2/8 Aust Fd Regt (one tp 25 pr, one tp 75 mm)
OFC Party 15 Aust Fd Bty
One SFCP

ENGRS

det 2/3 Aust Fd Coy
det 2/1 Aust Mech Eqp Coy

SIGS

det 20 Aust Inf Bde Sig Sec

INF

2/17 Aust Inf Bn
two pls B Coy 2/2 Aust IG Bn

INT

det 3 Aust FS Sec
det 34 Aust FS Sec (EE)
det 453 CIC

MED

one coy 2/8 Aust Fd Amb

AEME

det 2/9 Aust Arm'd Regt Wksp

BCE GP

det RAN Bch Cdo C
det 3 Aust Bch Sig Sec

MISC

Air Liaison Party
det HQ 20 Aust Inf Bde
det BRCAU
det Directorate Public Relations

PART 2 - 2/15 AUST INF BN GP

ARTY

15 Fd Bty 2/8 Aust Fd Regt (after landing is in sp of 2/17
Aust Inf Bn Gp)
one SFCP

ENGRS

det 2/3 Aust Fd Coy
det 2/1 Aust Mech Eqp Coy

SIGS

det 20 Aust Inf Bde Sig Sec

INF

2/15 Aust Inf Bn

INT

det B Aust FS Sec
det 3/1 Aust FS Sec (EE)

S & T det 2/27 Aust Sup Depot Pl

MED

one coy 2/8 Aust Fd Amb

BCH GP

det RAN Cdo C
det 3 Aust Bch Sig Sec

ITSC

Air Liaison Party
det 9 Aust Div Pro Coy
det HQ 20 Aust Inf Bde
det 9 Aust Div Sal Unit
one coy 727 Arty Trac Bn (for aslt ldg)
det BRCAN
det Directorate Public Relations

PART 3.1.2 BRIGADE RESERVE

(a) 2/13 AUST INF BN GP

ARTY

16 Fd Bty 2/8 Aust Fd Regt

ENGRS

det 2/3 Aust Fd Coy

SIGS

det 20 Aust Inf Bde Sig Sec

INF

2/13 Aust Inf Bn
one pl 3 Coy 2/2 Aust IG Bn

INT

det B Aust FS Sec
det 3/1 Aust FS Sec (EE)

MED

sec 2/8 Aust Fd Amb

BCH GP

det RAN Bch Cdo C
det 3 Aust Bch Sig Sec